

Get the Xtenna™ Advantage with GENERA™ RFID Tags

What makes Genera™ better?

FEATURES:

Absolute reliability and accuracy, with superior read rates on or wood, plastic and non-metallic material.

Maximum visibility for RFID capture at longer distances.

96 bit EPC Global Class-1 Gen-2 compliant tag with 512 bit user memory and password protection.

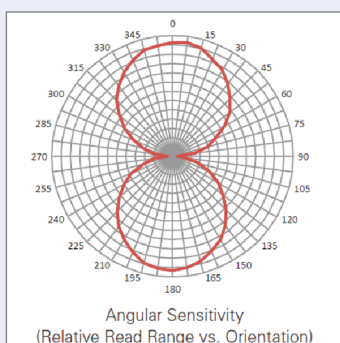
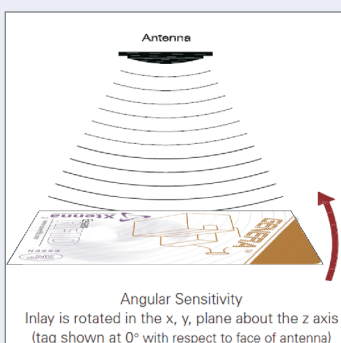
Provides enhanced read range compared to standard passive UHF tags for similar usage – over 45 feet with fixed readers and 12 feet with handheld readers, under European ETSI standards.

PVC material, with one side coated with industrial grade adhesive for good bonding.

APPLICATIONS:

Having an enhanced read range and reduced size, GENERA™ tags combine the best of both worlds - tags that can be read at longer distances, but having a smaller footprint. This makes them ideal for:

- Carton and pallet tracking
- Inventory management
- Transit tracking
- Distribution and retail



Implementing an RFID solution?

Tracking products, cartons, cases and pallets

from small start-ups to
enterprise level supply chain –
innovative technology
for every business

GENERA™

For cartons, cases, pallets, etc.

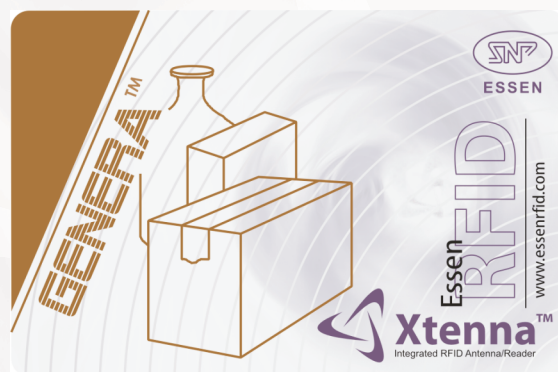
EPC Global Class-1 Gen-2 compliant

Read distance: 40 ft. (fixed reader)

Read distance: 12 ft. (handheld reader)

Tag size: 85 mm x 55 mm x 0.8 mm

Adhesive affixing



GENERA™ RFID tags can also be customized and incorporated within company labels for large-scale use on product inventory, cartons, pallets, etc., as well as for tagging finished goods and products.

A one-stop solution for all your RFID needs

Essen RFID –
integrates, extends, improves, simplifies,
fully scalable, saves cost, maximizes value;
helps your business take the next step forward.

High Performance RFID Tags**

Essen's Special RFID Tags for longer read distances

Essen RFID offers superior RFID Tags that have been specially devised to be read at longer distances. These special Tags outperform standard Passive RFID Tags through enhanced read range with superior reliability and accuracy – enabling quick item clearance, thereby improving overall operational efficiency.

Essen RFID Tags are currently available in ten specialized varieties, each customized for specific read objectives. From tracking people on the move, to vehicle access, to livestock tracking, to bulk cartons and pallets, liquid containers, metallic objects, storage racks, cargo and containers, equipment and machinery, as well as special tags for documents, laundry and solar panels – Essen RFID Tags provide full value for money, through higher performance, better reliability and greater efficiency.

GENERA™ – Technical Specifications

| GENERA™ | | |
|---------------|--------------------------|---|
| | ISO/IEC 18000-6C | |
| | EPC Global Class 1 Gen 2 | |
| | Integrated Circuit | IC with 800 bits of non-volatile memory |
| | Operating Frequency | 840 - 960 MHz |
| Memory | EPC Size | 96 - 480 bits |
| | User Memory | 512 bits |
| | TID | 32 bits |
| | Unique TID | 64 bits |
| | Access Password | 32 bits |
| | Kill Password | 32 bits |
| Environmental | Operating Limits | -20°C to +70°C * |
| | | 20% to 90% RH non-condensing |
| | Drop Resistance | Per ASTM D5276 |
| | Write Cycles | 100,000 |
| | RoHS | 2002/95/EC compliant |
| | ESD – HBM / CDM | > 5.0 kV / > 1.5 kV |
| | Dimensions | 85 mm x 55 mm x 0.8 mm |

Essen reserves the right to modify specifications without notice.

© 2012 Essen

* PVC Material

** Integrated 9dBi Antenna with 1 watt Reader

Essen's innovative Xtenna™ based RFID devices
and solutions that break the price/value trade-off.
Cost-effective, yet world-class.
Get the Xtenna™ Advantage.



Essen Energy Conversion Devices Pvt Ltd
24 B, Jolly Maker II, Nariman Point, Mumbai 400 021 INDIA
Tel: +91 22 6632 5363 • Fax: +91 22 6632 5366
Email: xtenna@essenrfid.com • Web: www.essenrfid.com

Syscomp
1 Woodgrove Turn, Warren
NJ 07059 USA
Tel: 1-732-604-3055
Email: harish_purohit@essenrfid.com

Mr. James Snyder
2913 SW 22nd Cir #36D
Delray Beach, FL 33445 USA
Tel: 1-561-272-6227
Email: james@essenrfid.com

MORE TAGS FROM ESSEN RFID:

PERSONNA™

For tracking people
Read distance: 40 ft. (fixed reader)
Tag size: 85 mm x 55 mm x 0.8 mm
ID Card carried on person

PARKA™

For vehicle tracking
Read distance: 40 ft. (fixed reader)
Tag size: 90 mm x 65 mm x 0.8 mm
Mounted inside car windshield

METALLICA™

For machinery, racks, containers, etc.
Read distance: 20 ft. (fixed reader)
Read distance: 12 ft. (handheld reader)
Tag size: 102 mm x 38 mm x 8 mm
Rivet mounting; adhesive affixing

µMETALLICA™

For metal casings, hardware, etc.
Read distance: 20 ft. (fixed reader)
Read distance: 8 ft. (handheld reader)
Tag size: 79 mm x 16 mm x 3 mm
Rivet mounting; adhesive affixing

MICRA™

For jewellery
Read distance: 8 ft. (handheld reader)
Tag size: 32 mm x 12 mm x 0.8 mm
Plastic wire looping

ACQUA™

For laundry
Read distance: 18 ft. (fixed reader)
Read distance: 8 ft. (handheld reader)
Tag size: 100 mm x 27 mm x 6 mm
Cable/string tied

BOVINA™

For livestock tracking
Read distance: 20 ft. (fixed reader)
Read distance: 12 ft. (handheld reader)
Tag size: 80 mm x 68 mm x 2.5 mm
Ear tagging by press punch

LIBRA™

For documents, files, books, etc.
Read distance: 10 ft. (handheld reader)
Tag size: 80 mm x 10 mm x 0.3 mm
Adhesive affixing

SOLANNA™

For solar panels
Read distance: 12 ft. (handheld reader)
Tag size: 86 mm x 28 mm x 0.3 mm
Adhesive affixing

Note: All distances in free air. Optimized for Xtenna™