

Get the  
**Xtenna™**  
**RFID Advantage**  
 using **Xtenna Studio™**  
**RFID Middleware**  
**Platform Connectivity**

## Implementing an RFID solution?

from small start-ups to enterprise level applications – innovative technology for every business

A complete one-stop solution, Essen RFID's **Xtenna Studio™** is a low cost, high performance RFID middleware platform that provides enterprise-level, fully scalable RFID functionality to Small & Medium Enterprises. A full-featured package with zero license fee costs\*, lesser disk space utilization and faster processing times coupled with remote management capabilities, Xtenna Studio™ is the smart choice for companies seeking to survive, grow and prosper in a tough business environment. Whether mandated to move towards RFID or striving for competitive advantage, innovative technology incorporated in the Xtenna Studio™ platform gives SME organizations a headstart through efficient deployment and faster ROI on their RFID investments.

### Features

Xtenna Studio™ is an enterprise level RFID middleware that manages the flow of RFID data from Xtenna™ to the application layer. It has been designed to be a robust, scalable and easy to configure middleware platform that can be easily maintained.

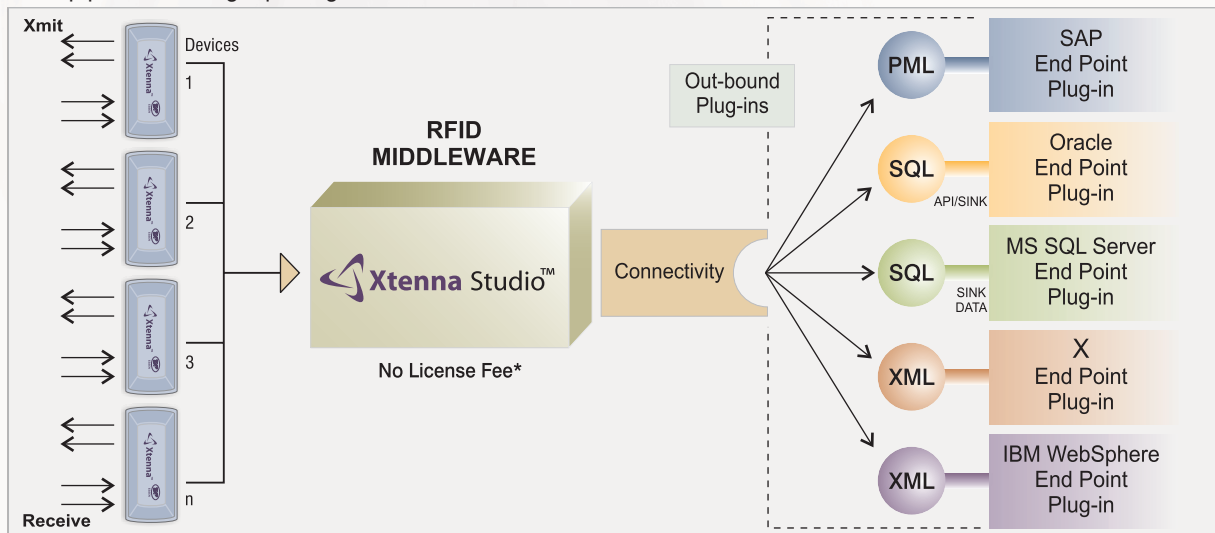
Xtenna Studio™ is a full-scale \*free license RFID middleware platform. Licensing of other RFID middleware platforms is not required.

Xtenna Studio™ performs functions such as providing connectivity, data routing and data transformation with other systems. Data routing helps manage different input for different enterprise applications.

**Xtenna Studio™ has the native ability to administer Xtenna™ RFID devices remotely. Seamless operation and remote monitoring of mission critical functions can be easily done through mailing and SMS alerts, by custom level plug-ins.**

**Xtenna Studio™ provides flexibility to clients to integrate any application with plug-ins that they can create in exportable formats such as XML, CSV, XLS, etc. Custom plug-ins for enterprise applications such as SAP, and databases such as Oracle, MS SQL Server, etc. can also be built by client companies on their own.**

Xtenna Studio™ can be easily integrated with existing server environments. It can seamlessly provide data to key Enterprise level servers such as IBM WebSphere server and Microsoft BizTalk server, by exporting data in XML format via http port or message queuing.

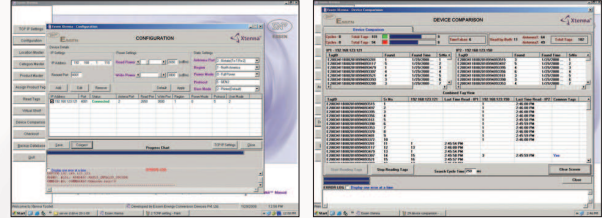


\* Conditions Apply

# Solutions for Small & Medium Enterprises

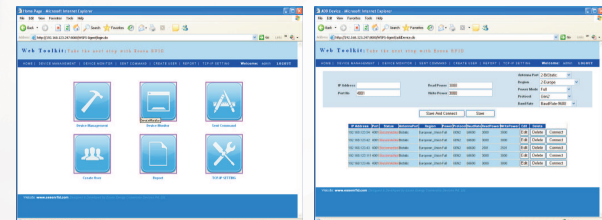
## Xtenna™ Toolkit

Consists of the remotely manageable software component of Xtenna™ RFID hardware. Contains various specifications and settings for device setup and management, such as protocol, configuration, region, power output, TCP/IP settings, etc.



## Xtenna™ WebToolkit

Consists of the remotely manageable software component of Xtenna™ RFID hardware using web browser. Contains various specifications and settings for device setup and management, such as protocol, configuration, region, power output, TCP/IP settings, multiple database connectivity (MS SQL, Oracle, Db2, MySQL) etc.

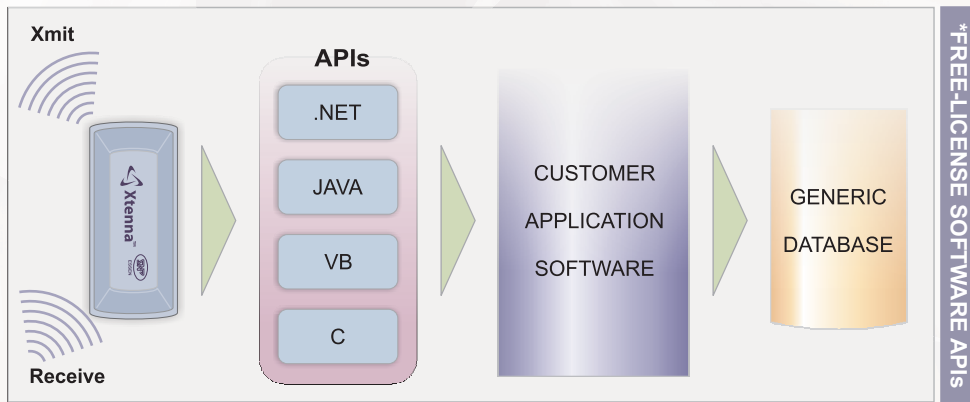


## Software APIs

Integrators that act as an interface between the Xtenna™ RFID hardware device and the front end application.

Available in VB, C and .Net (MS Windows), and Java (MS Windows/Linux)

Typical usage in smaller customer applications such as **Parking Management, Asset Tracking**, etc.



\* Conditions Apply



**Essen Energy Conversion Devices Pvt Ltd**  
 24 B, Jolly Maker II, Nariman Point, Bombay 400 021 INDIA  
 Tel: +91 22 6632 5363 • Fax: +91 22 6632 5366  
 Email: xtenna@essenfid.com • Web: www.essenfid.com

**Syscomp**  
 1 Woodgrove Turn, Warren, NJ 07059 USA  
 Tel: 1-732-604-3055  
 Email: harish\_purohit@essenfid.com

**Mr. James Snyder**  
 2913 SW 22nd Cir #36D, Delray Beach, FL 33445 USA  
 Tel: 1-561-272-6227  
 Email: james@essenfid.com